



Underfloor Heating

DESCRIPTION

GYVLON FLOWING SCREED is a blend of **GYVLON BINDER**, special additives and selected aggregates mixed with clean potable water to produce a flowing pumpable screed (manufactured to BSEN 13813:2002) which is ideal for application over warm water and electric under floor heating systems.

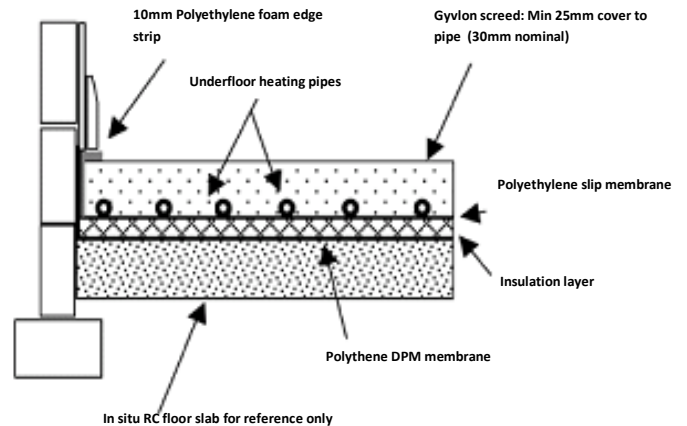
KEY FEATURES

- Increased productivity - 2000m²/day can be easily achieved.
- Self compacting
- Self curing.
- Can be walked on in 24-48 hours.
- Can be loaded after 7 days
- Extremely low shrinkage - does not curl and minimizes the risk of cracking.
- Avoids the need for reinforcement.
- Significantly reduced thickness when compared to traditional sand - cement screed
- Large bay sizes of up to 1000m² depending on application (heated floors 300m²).
- Ideal for use with under floor heating
- Can be force dried as early as 7 days after application.
- Weight saving as a result of thinner section.
- Dries at a rate of 1mm per day up to a screed depth of 40mm in good drying conditions
- Easily achieves SR2 finish as described in BS8204.
- Protein free - cannot harbour harmful bacteria.
- Non combustible (tested to BS476 Part 4).
- Minimal Thermal expansion (0.012mm/mK).
- Excellent thermal conductivity.
- Environmentally friendly

ADDITIONAL FEATURES

- Fully encapsulates heating conduits
- Elimination of voids & maximised thermal efficiency
- Rapid response and controllability
- Reduced depth allows more insulation

TYPICAL SCHEMATIC INSTALLATION



KEY INSTALLATION POINTS

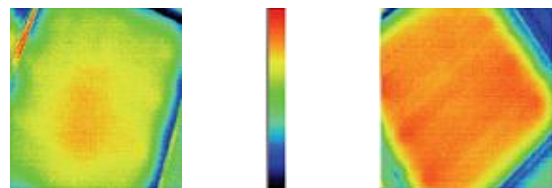
- Pipes or cables must be securely fixed to prevent floatation and lifting during application of the screed.
- Pipes should be pressurised in accordance with BS 1264:2001:4
- Minimum cover to pipes or cables must be 25mm (nominal 30mm)
- If required surface laitance must be removed prior to commissioning of under floor heating.
- Heating must be commissioned and run in accordance with manufacturer's instructions prior to application of the floor finish.
- Gyvlon recommend the use of floor thermostats with electric under floor heating elements.

Expansion joints should be used between different heating zones and at door thresholds

(refer to relevant data sheet for bay sizes and aspect ratios. Or contact your local Specification manager for advice)

Sand Cement Surface Gyvlon Screed

Temperature



Temperature across screed surface 80mins after turning underfloor heating on



greenspec®

Issue 2—Revision 0—01-03-12

an ETEX GROUP company